

House & Land Package.



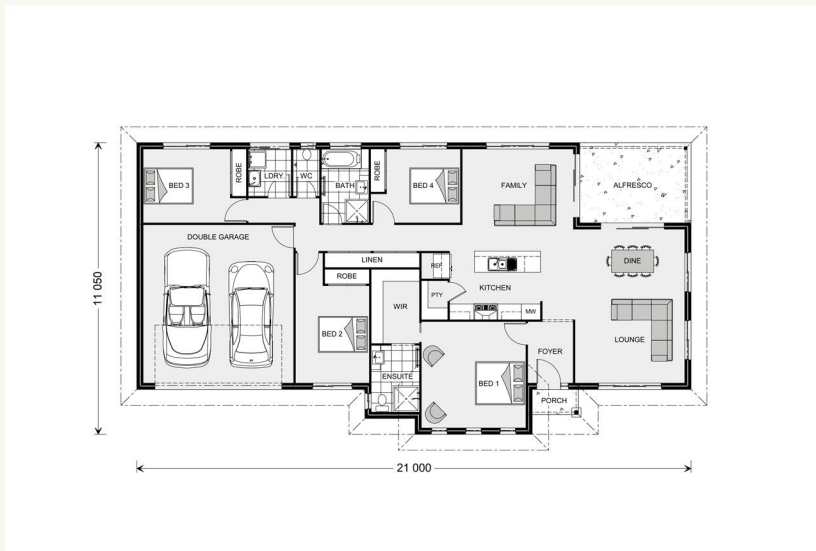
From \$500,000* (incl GST)

Lot 20 Joy Place (771 m²)

Package includes[^]:

- + Fixed Price Build Contract
- + Standard Site Costs
- + Site Inspections & Online Progress Tracker
- + Floor Coverings & Driveway Included
- + Quality SMEG Appliances
- + Upgraded Colonial Facade

[^]Please see the website for a full list of inclusions.



Terms and conditions *Package price is based on standard home, standard floor plan and standard façade (may be smaller than façade shown). Package may be subject to developer's design review panel, council final approval and G.J. Gardner Homes procedure of purchase. Package price excludes stamp duty on land, legal fees and conveyancing costs (including transfer of title and searches). Prices are inclusive of GST and may change without notice. Package subject to two separate contracts. G.J Gardner Homes makes no guarantee the lot number advertised will be available at the time of purchase. Photographs may depict fixtures, finishes and features not supplied by G.J Gardner Homes. Excluded items include but are not limited to landscaping items such as planter boxes, retaining walls, water features, pergolas, screens, driveways and decorative items such as fencing and outdoor kitchens or barbecues. This design and illustration remains the property of G.J Gardner Homes and may not be reproduced in whole or in part without written consent. For detailed home pricing, please talk to a New Homes Consultant. Better Builders Batemans Bay Pty Limited T/As G.J Gardner Homes Batemans Bay. Builders licence 250712C. Created 04/11/2016.

Rothbury 208 Estate.

4 2.0 2

Itemised Floor Area	Area
Internal	156.10
Garage	37.10
Alfresco	12.80
Porch	1.70
Gross	207.70

Drop in for a chat today.

Shop 3, Cnr Beach Rd & Orient Street,
Batemans Bay NSW 2536

Contact us.

Call Catherine Jay on 02 4472 9524,
email catherine.jay@gjgardner.com.au or
visit us online at gjgardner.com.au